



# Friends of Park Wood

London Rd (A3), between Wallis & Queens Roads, Waterlooville

## SUMMER 2011 Newsletter

Visit our website: [www.park-wood.org](http://www.park-wood.org) Email: [press@park-wood.org](mailto:press@park-wood.org)

Tel: 023 9226 6418 or 023 9223 2942

### Pub Quiz

All Welcome

The Woodpecker Pub  
Wednesday 8.15pm

### DATES FOR YOUR DIARIES:

#### MEADOW CLEARING

Saturday and Sunday 24 and 25<sup>th</sup> September 2011

As many volunteers as possible are needed to help clear front and south meadow. Mowers will be hired. This work helps ensure the biodiversity of the wood.

All ages needed to help rake up grass cuttings. Bring a rake if you have one

**Note:** No workday in August



### Boys and Their Toys!

Steve Lush hard at work at the recent path laying weekend.

This was a very successful project. The Park Wood volunteers were supported by 9 volunteers from Scottish and Southern Electricity. Funding for the project came from Hampshire County Council 'accessibility fund'.

Have you seen the results? Hopefully the paths will remain 'bog free' over the winter.

**THANK YOU TO EVERYONE WHO HELPED**



### Message from the Woodland Trust – Join the Forestry Conversation

In January, many took part in the Woodland Trust's campaign that challenged Government plans to sell off the public forest estate. You told us of your concerns around the protection affecting ancient woodland, the lack of secure access to woods and the risks to wildlife if damaged ancient woods are left unrestored. You were worried that problems would rapidly escalate if sales had gone ahead.

The issues you raised still exist. They have not gone away and they are still up for discussion. Find out more about the Independent Panel:

<http://www.woodlandtrust.org.uk/en/campaigning/our-campaigns/panel/Pages/forestrypanel.aspx>

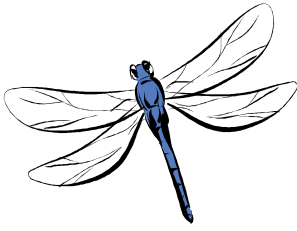
The independent Panel has been appointed to look at all aspects of forestry policy across England and has launched a 'call for views'. We have made it easy for everyone to speak up for woods and trees using our simple electronic form. Your contribution will be sent straight to the Panel - it is waiting to hear from you and ready to listen before making its recommendations to Government.

Join the forestry conversation now:

<http://www.woodlandtrust.org.uk/en/campaigning/our-campaigns/panel/Pages/panelaction.aspx>

2,500 people have already made practical, thoughtful and inspiring contributions using our form. Please add your voice too as there is all to play for.

*The Woodland Trust*



## Dragon Flies

Midsummer is the time to go and look for dragonflies and their smaller relatives, damselflies. Although they need water - rivers, streams and ponds - to breed in, you can see them just about anywhere after that.

Dragonflies feed on smaller insects, and different species employ different methods of **hunting**. Some, like the hawkers, patrol their territory constantly and snatch up flying bugs. Bristles on their legs act like a basket to scoop up prey. Others, like the darters, find a lookout perch and make shorter flights from that, often returning to the same spot to eat their catch. Watching what a dragonfly does can help you identify it.

When **mating**, dragonflies and damselflies pose in a heart-shape. It's not very romantic, though. The male flies after the female and grabs her behind her head. If she cooperates, she brings the tip of her tail round to join his body, and mating occurs. When mating's over, the female must **lay eggs** - usually into water, but sometimes onto waterside plants or even wood

These insects are fascinating to watch at all stages of their life-cycle. Fertilised eggs develop into nymphs which can spend up to three years **living underwater** (depending on the species - the bigger ones take longer). In spring and summer, dragonfly nymphs climb out of the water and undergo a **transformation**. Perching on a leaf or stem, they burst out of their own skins, do a backflip and have to wait to toughen up before they can fly away. If you're lucky enough to see this process, you're in for a treat - one of nature's most amazing sights.

Interested in learning more? Go to <http://www.british-dragonflies.org.uk/content/key-sites>

**If you would like to get involved in recording dragonflies in Hampshire and Isle of Wight** contact Peter Allen email [allenbds@waitrose.com](mailto:allenbds@waitrose.com) tel: 01725 519 269



### Cowplain School - Horticultural Course

Volunteers from Park Wood assisted Cowplain school in introducing woodland maintenance to their group of students studying for a NVQ in horticulture.

9 students helped to clear the bluebell area of bracken and bramble. In doing so they discovered a fully formed birds nest. They decided to create their own 'nest'. Above you can see 3 volunteers demonstrating it!!

### Warden update

More volunteers have come forward to cover every day of the month, but there are still a couple of days available, so if you would like to help contact

[davidnye@ntlworld.com](mailto:davidnye@ntlworld.com) or telephone **023 9223 2942**

Thank you to all those who help to keep the wood looking pristine

You will have seen the new litter bins. These are being well used and help to keep the wood litter free.

### Storytelling

A few months ago Hampshire County Council ran a story telling event for disabled children in Park Wood. The story of goblins, fairies and giants came alive as the wood was walked. Have you seen the new signs that have been put in the wood to enable you to follow the story? Go to [www.hants.gov.uk/storytrails](http://www.hants.gov.uk/storytrails) and follow the magic. (Will be available shortly!)

### QUIZ EVENING

We have averaged about 6 people in the team each week but still not come first, so we need more help!

Why not join in? Concerned you may not know anyone?

Don't worry the pub have reserved a table for us so just ask for the Park Wood table and you will find the team.

Look forward to seeing you soon

## Events

There have been concerns that the FREE events that have been put on in the woods for the local community have been badly attended. The spider hunt attracted only 3 people, the bat walk only 5. The Easter egg hunt 3 families. In view of this the committee is considering stopping these events which would be a shame as they are a great way to discover the delights of the woodland for adults and children alike.

I am a new volunteer and have offered to arrange events for the future.

What would YOU like to see? What would YOU attend? Or do you think we should STOP.

Let me know

Sandra email: [sndrlynes315@gmail.com](mailto:sndrlynes315@gmail.com)

## White Paper on the Natural Environment

Recently some Park Wood Volunteers attended a workshop to explore the role of community groups in ensuring the security and quality of the natural environment.

Defra published the White Paper on the Natural Environment earlier this month. Information on the paper can be found here: <http://www.defra.gov.uk/environment/natural/whitepaper/>

It is great to see that the Defra team took note of contributions from the workshop, particularly in the design of "Local Nature partnerships". The aim is for the partnerships to complement the successful district and neighbourhood groups that are working to achieve positive outcomes at a smaller geographic scale. This structure should provide stronger linkages between community groups, who in turn should have more power to shape local environment plans.

These workshops were facilitated by BTCV - <http://www2.btcv.org.uk/display/home>

## Feedback

Have you any comments on this newsletter, or an article that you would like included in the next edition, then let me know

*Jackie Buckley*

[buckleypjn@btopenworld.com](mailto:buckleypjn@btopenworld.com)

023 9226 6418

## WEBSITE

Want to see more photos of the path laying ?

Want to see what else is happening?

Check out our website

[www.park-wood.org](http://www.park-wood.org)

## Being a Member

Being a member genuinely helps keep the wood looking good, please don't feel guilty if you cannot make it to workdays!

So how else can you help? Encourage your neighbours to join.

Tell others about the wood and encourage them to visit

Take your visitors around the wood. Use the walk leaflet to give information. If you want one email Jackie

Or just walk the woods and ENJOY

## Walking for Health

Being a member of the Waterlooville 'Walking for Health' Group I have the pleasure of walking round Park Wood every Thursday morning. This gives me the opportunity to enjoy the tranquility and seasonal changes taking place, and appreciate the work carried out by the Friends of Park Wood providing safe paths and natural habitats etc. Members of my group especially look forward to seeing the carpet of bluebells in the spring and hunting for orchids in the meadow in the summer. It is fun, also, to see the amazement on the faces of new members when they see the huge carved feet!

Marion Hammond  
Member  
Friends of Park Wood

